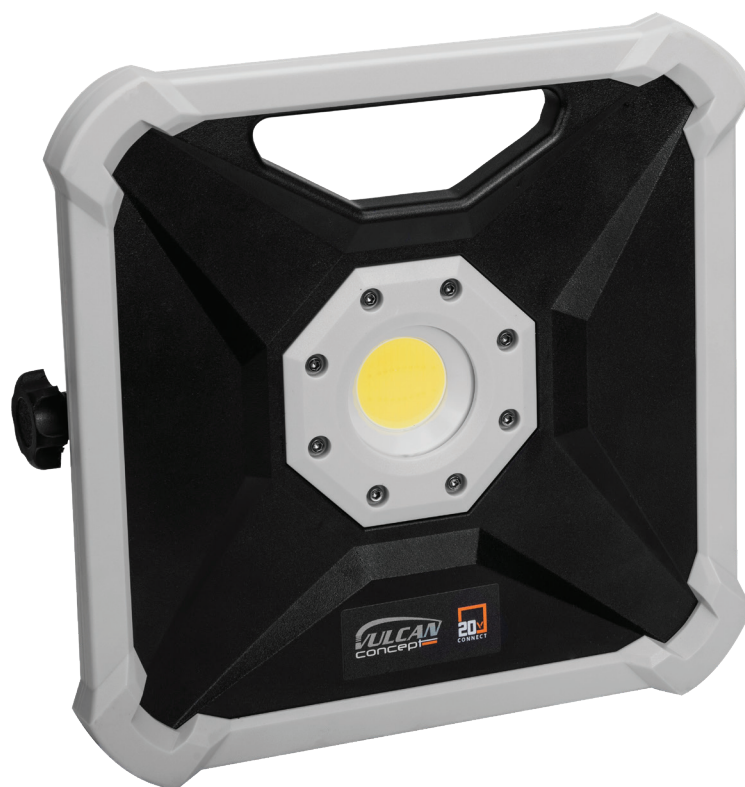




PRODUCT FEATURES

Powered by universal system battery 20V. Luminous flux (max.) 800 lm/1600 lm. 2 light modes (50% - 100%). Light angle 100 - 120°. Case made from aluminum. Model without battery and charger.



20V d.c. CCT 5500 K 8500 K CRI >80 900 lm 1800 lm CE

Code	VJL13
rated voltage	20 V
equipment	without charger; battery included
carton quantities	8